



www.intersect.org.nz

WAIORA ARTERIES OF AOTEAROA

ART COMPETITION



Waiora - Arteries of Aotearoa

Art competition for young New Zealand artists

Request for proposals - to submit a proposal to create public artwork

Final Submission Due - Wednesday June 3, 2009, 4pm

RFP issued by:

Megan Hosking and Sarah Campbell

c/o- Intersect

ph: (04) 3849679

www.intersect.org.nz

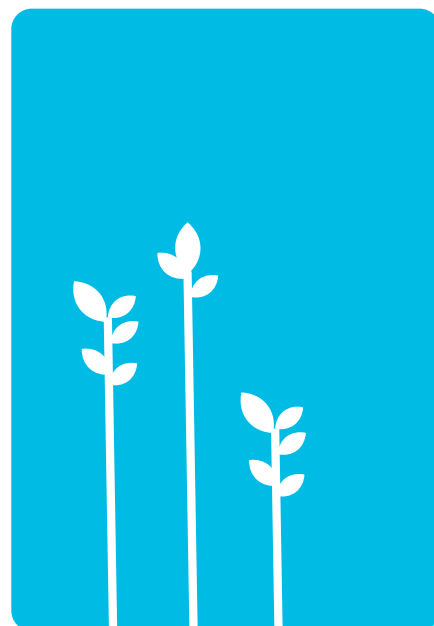
youngnzartist@gmail.com

Document contents

1	Introduction.....	P2
2	RFP Information.....	P2
2.1	Background to this RFP.....	P2
2.2	Our Brief.....	P2
2.3	Proposal Requirements.....	P3
3	Submission details & dates.....	P3
4	Terms and Conditions.....	P4
5	Assessment of Proposals.....	P5
6	Cover Letter.....	P6

1. INTRODUCTION

Intersect invites young artists (18-25) to submit a proposal for an artwork that is an interpretation of the central idea of “Waiora, Arteries of Aoteroa”. The successful proposal will win \$1000 for material costs, and a cash prize of \$1000.



2. RFP INFORMATION

2.1 BACKGROUND TO THIS RFP

In this year of Planet Earth, the Intersect Network (www.intersect.org.nz) is hosting a national competition that engages young artists to represent Waiora (Maori translation - healthy water) as the lifeblood of our nation, our identity, our people and our health and well-being. Artists are encouraged to investigate issues of fresh water consumption and supply, and how cultural diversity can both challenge and unify people of New Zealand and the Pacific in protecting our most precious natural resources. We are also encouraging artists in their proposals to consider the broader human rights issues that access to fresh-water surfaces.

2.2 OUR BRIEF

We are seeking Artists to create a proposal for an artwork around the idea ‘Waiora - Arteries of Aotearoa’. This could take the form of a painting, sculpture, photography, video/film, or other creative installation.

The winning artwork will embody all or some of the following qualities:

- a. Inspire** in the viewer a sense of the significance of water for Aotearoa’s future (consider cultural, social and environmental elements)
- b. explore cultural diversity** in relation to our fresh water resources
- c. demonstrate commitment to producing the artwork sustainably:** minimising waste and

non-renewable resources while maximising Mauri or 'life force'.

The successful artwork will be unveiled at a nationally publicised launch event.

2.3 PROPOSAL REQUIREMENTS

Your proposal should include the following:

1. **Cover letter** - include your name, postal address, location, phone number, email address and educational institution (if applicable)
2. **Your proposal**; a written summary of your idea and how it fulfils our criteria (300 words max)
3. **Backgrounder**; Tell us about yourself and what this artwork means to you (300 words max)
4. **Supporting visual material**; Drawings, plans, photos, collages and/or schematics to demonstrate your proposal. Artists are encouraged to include samples or photo documentation of previously completed and/or representative work. (Remember: all this needs to fit in an A3 envelope!)
5. **Proposed budget** - which includes planning, design, materials, installation, and any other expenses.
6. **Installation plan** which outlines the functional requirements for your artwork; e.g. power, plumbing, indicative dimensions, projection, indicative weight and transport requirements.

3. SUBMISSION DETAILS AND DATES

Proposals must use the cover-letter template (p6) of this document.

Closing date and timeframes

Proposals are due by Wednesday 3 June 2009

Proposals must be received by 4pm on the closing date. We may at our discretion accept or reject from consideration any late proposals. The winning artist and all other proposers will be notified of the outcome by 8th June 2009.

The Artwork must be created and installed by the artist in time for the 3th July 2009 launch. Any clarification or further information in respect of this RFP can be sought on the website: www.intersect.org.nz/waiora

Every effort will be made by us to respond to an enquiry within the working day of receipt of an email. You may be asked to provide clarification regarding your proposal or provide additional information during the evaluation process.

Postal information:

Put your proposal elements, and cover letter (p6) in an A3 Envelope, and post to:
Intersect Waiora Competition, PO Box 19042, Wellington 6011

Eligibility

This is an open invitation to individual artists and designers aged 18-25, who are New Zealand citizens, to submit concepts, ideas and a preliminary proposal for review.

Selection Panel

Megan Tamati-Quenelle (Toi Maori Curator, Te Papa)

Wayne Youle (Artist - Ngapuhi, Ngati Whakaeke, Ngati Pakeha)

Sophie Jerram (Artist, Filmmaker, Writer and Sustainable Investor)

James Blackie (Director - Page Blackie Gallery)

Hayden Montgomerie (NZ Commission for UNESCO)

Megan Hosking and Sarah Campbell (Intersect Trustees)

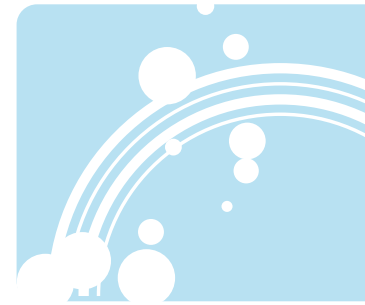
4 TERMS AND CONDITIONS

To encourage people to develop an artwork which re-uses existing materials, any money not spent on materials can be used at the discretion of the artist.

- This request for proposal is issued on the understanding that no compensation will be offered for preparation of your proposal or other information that may be supplied.
- The winning artist will be awarded \$1000 at the unveiling of their work at the launch in Wellington.
- At the judges discretion, there will be a second round with 3 finalists winning \$100 Gordon Harris vouchers, and asked to produce detailed sketches/storyboard.
- Artists must be available to come to Wellington to install the artwork, in time for the launch and will be required to attend the unveiling.
- The winning artist will be granted \$1000 towards the costs of making the artwork. of the artwork . They must supply receipts to Intersect for purchased materials. To encourage recycling and re-use of non-renewable resources, any of the materials budget not utilised can be retained by the winning artist.
- Intersect reserves the right to extend the closing date for RFP responses and to accept or decline late or incomplete proposals at its discretion.
- Intersect will retain the ownership of the commissioned artwork
- Only applications from New Zealand citizens will be accepted
- In the event that the artwork is sold, 50% of the proceeds of sale (after tax deductions, and costs) will be returned to the artist.
- Intersect reserves the right to photograph, video and encourage media coverage of the successful proposal and the finished artwork.
- Intersect will only return unsuccessful proposals when a stamped, self addressed envelope is supplied by the applicant.
- Any unsuccessful proposals will not be disclosed to anyone outside of the judging panel and will remain copyright of the Artist. Unsuccessful proposals and judging evaluation forms will be shredded and the paper recycled.
- Information relating to the examination, clarification, evaluation and comparison of

proposals and the recommendations for selection of Proposers is confidential to Intersect and will not be disclosed to anyone outside of the judging panel.

- This RFP and any contract arising from it will be construed according to and governed by New Zealand law.
- Intersect will contribute up to \$300 (incl GST) to the travel and accommodation of the winning artist.
- Intersect will contribute up to \$200 (incl GST) for the transport and installation costs for the artwork.
- Artists must acknowledge in their cover letter that they accept all the terms and conditions and information requirements contained in this document.



5 ASSESSMENT OF PROPOSALS

Our Evaluation Criteria

- We are looking for an artwork with big emotional content. The artwork needs to ‘move’ people; we want passers by to be stopped in their tracks, scratching their head in wonder, gripped with concern, or inspired and amazed.
- The artwork proposal will communicate the ideas outlined in the brief (See section 2).
- The artwork will challenge the audience, and make them think deeply.
- We will be confident that the artist has the skill and capability in delivering the artwork to a high standard within the allocated budget.
- We are looking for a proposal that can realistically be developed within the material budget and timeframe outlined in section 3.
- The artist needs to demonstrate their ability to produce work of a high production values and show strong aesthetic sensibilities.
- The artist will clearly convey in their proposal the costs and logistics related to transporting and installing the artwork in a gallery in Wellington.
- The artwork is not deemed obscene or offensive, and is appropriate to exhibit in a public gallery.